

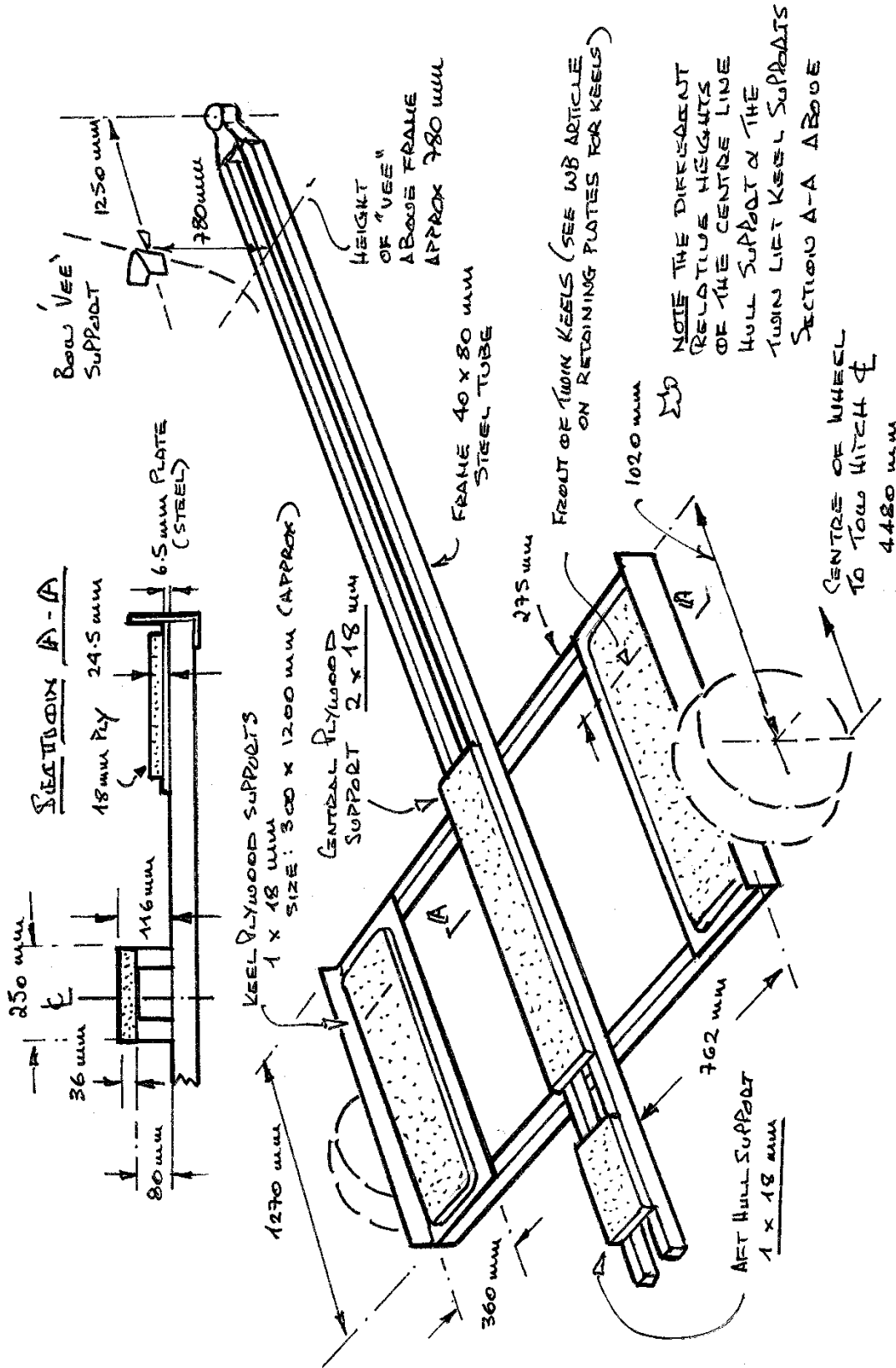
Road Trailer Layout for Twin Lift Keel Freedom 21

The UK-built twin lift keel Freedom 21 requires a specific road trailer arrangement to enable the boat to be readily launched and recovered in the “keels-up” configuration and the general arrangement of this trailer design is shown in the photograph below. It seems that most of these trailers were supplied by **Lizard Trailer Services** in Cornwall and contact details for this company are given at the end of the article.



This road trailer design supports the retracted twin lift keels on the two side platforms whilst the boat hull is supported on the centreline support platforms and to provide the correct support for the boat it is important to set these platforms at the correct heights in relation to each other. The overall dimensions of the above trailer are given in the attached sketch diagram, together with the relative heights of the support platforms. It should be noted that the two centreline support platforms are set at slightly different heights to each other. The reason for this seems to be that the hull of the twin lift keel Freedom 21 was moulded in the standard fixed keel mould where a slight centreline recess is built into the hull for fitting the normal fin keel.

I did try to eliminate the smaller aftermost centreline support platform when I removed the plywood panels for repainting but I found that the boat then had a tendency to “rock” slightly on the trailer in a fore and aft direction without the aftermost support so I replaced it. Clearly this aft centreline support is essential. This matter of the different centreline support heights is best shown in the sketch below:



LIK #21 TWIN KEEL TRAILER

WB 15.02.2009